

Grassfield HS

Baritone (T.C.) 1
Performance Time - 2'31"

Part 2: 160 BPM

Hans Zimmer
arr. Michael Oare
perc. arr. K.J. Stafford

Allegro ♩ = 160



A



B



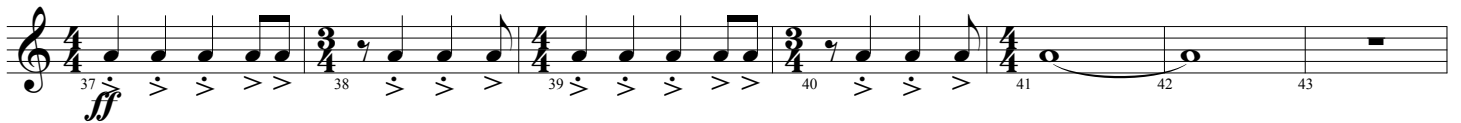
C



D



E



F



G



H

Musical staff H, measures 56-63. Starts with a dynamic marking of *f*. The staff contains a sequence of notes with various time signatures: 4/4, 3/4, 4/4, 3/4, 4/4, 3/4, 4/4, 3/4, 4/4.

I

Musical staff I, measures 64-71. Includes a dynamic marking of *ff* with a hairpin. The staff contains notes with time signatures: 4/4, 3/4, 4/4, 3/4, 4/4, 3/4, 4/4, 3/4, 4/4.

J

Musical staff J, measures 72-77. The staff contains notes with time signatures: 4/4, 3/4, 4/4, 3/4, 4/4, 3/4, 4/4.

K

Musical staff K, measures 78-83. The staff contains notes with time signatures: 4/4, 3/4, 4/4, 3/4, 4/4, 3/4, 4/4.

L

Musical staff L, measures 84-89. Includes a dynamic marking of *mp*. The staff contains notes with time signatures: 4/4, 3/4, 7/8, 8/8, 8/8, 8/8, 4/4.

M

Musical staff M, measures 90-95. Starts with a dynamic marking of *f*. The staff contains notes with time signatures: 4/4, 3/4, 4/4, 3/4, 4/4, 3/4, 4/4.

N

Musical staff N, measures 96-103. Includes a dynamic marking of *ff*. The staff contains notes with time signatures: 4/4, 3/4, 6/8, 4/4, 3/4, 4/4, 3/4, 4/4.

O

Musical staff O, measures 104-109. Starts with a dynamic marking of *mf*. The staff contains notes with time signatures: 4/4, 3/4, 4/4, 3/4, 4/4, 3/4, 4/4.

Musical staff continuation, measures 110-115. Starts with a dynamic marking of *f* and includes a *ff* marking. The staff contains notes with time signatures: 4/4, 3/4, 4/4, 4/4, 4/4.