

# INTO THE COSMOS

E♭ Alto Sax 2

Performance Time: 2'39"

Revised 7/7/11

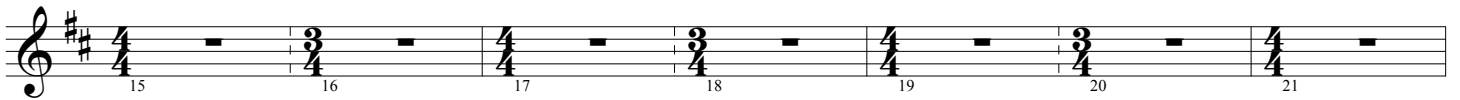
## Part 3: Celestial Phenomenon

arr. Michael Oare  
perc. arr. Tom Rarick

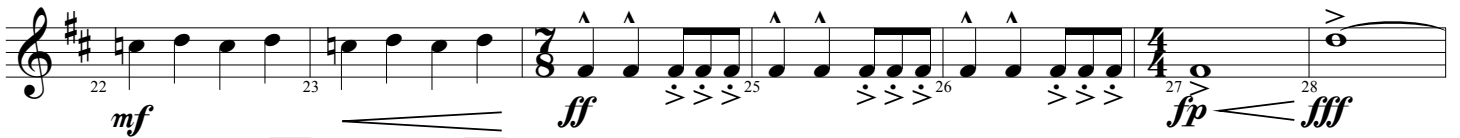
Fast ♩ = 168



A



B



C

D



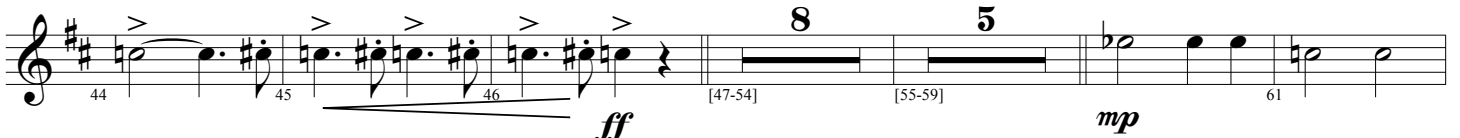
E



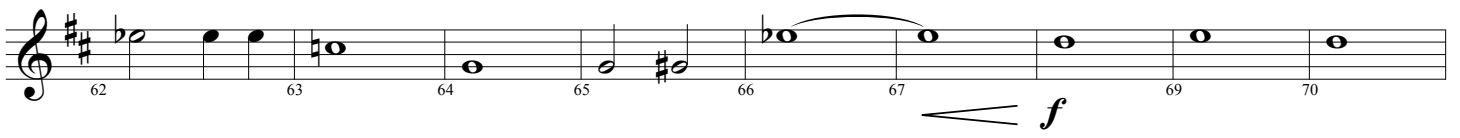
F

G

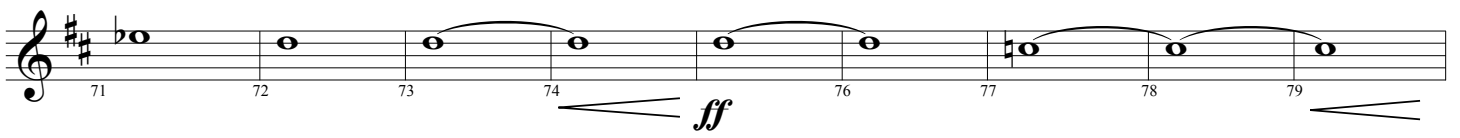
H



I



J



Part 3: Celestial Phenomenon  
E♭ Alto Sax 2

**K**

2

[80-81]

83 84 85 86 87 88

89 90 91 92 93 94 95 96 97

98 99 100 101 102

[103-108] [109-110] [111-112]

*ff*

*fff*

6 2 2